

IG11

# Harbard Close IG11 Barking

Floorplans



## Contents

Site overview	4
Floorplates	5 – 10
Floorplans	11 – 27
Contact	28

- 01 Entrance
- 02 Bike store
- 03 Lobby & Postboxes
- 04 Lift
- 05 Stairs
- 06 Bin store
- 07 Table tennis
- 08 Residents' garden
- 09 Substation
- 10 Plant room
- 11 Residents' internal amenity space

## Site overview



This plan is indicative only and demonstrates the new development layout, please familiarise yourself with the local surrounding area.

Floorplates

Ground Floor  
Block 1 and Block 2

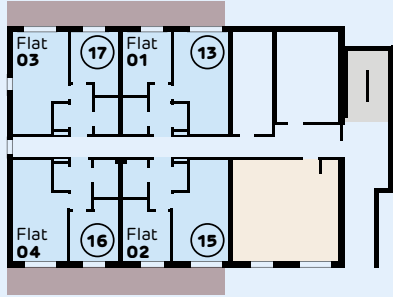


Floorplates

Floor 01  
Block 1 and Block 2

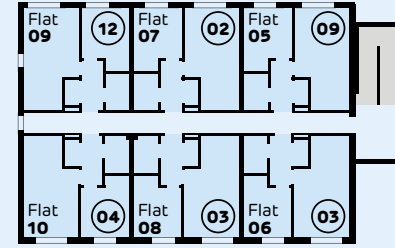


- Plot type
- Stairs
- Lift
- Communal space
- Terraces



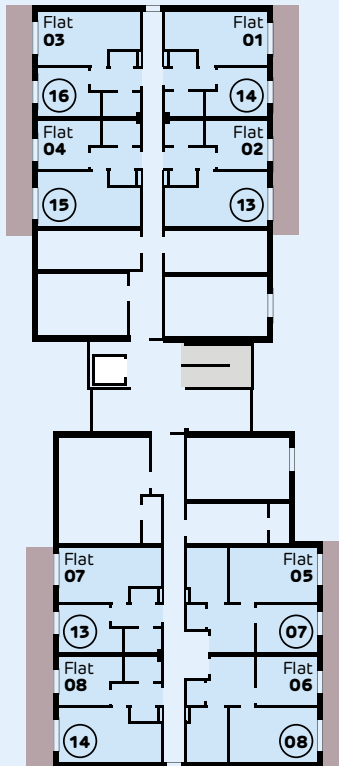
Block 2

- Plot type
- Stairs
- Lift

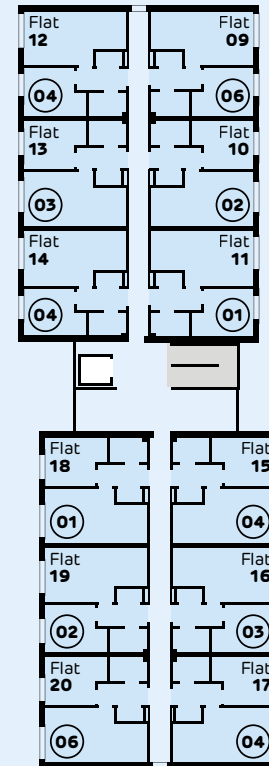


Block 2

Block 1



Block 1



Floorplates

Floor 02  
Block 1 and Block 2

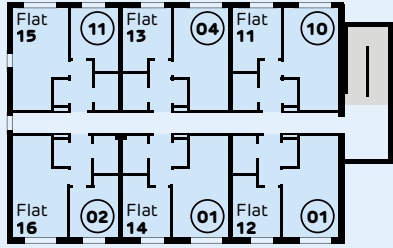


Floorplates

Floor 03  
Block 1 and Block 2

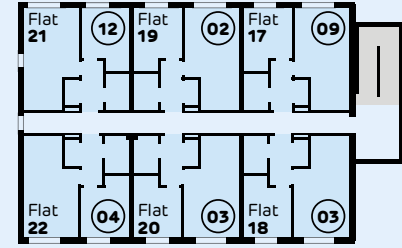


- Plot type
- Stairs
- Lift



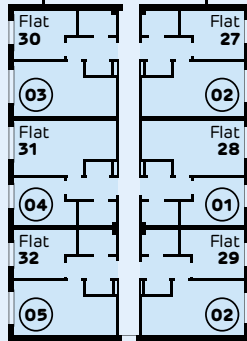
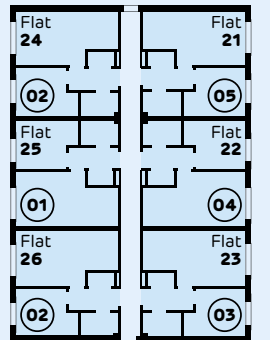
Block 2

- Plot type
- Stairs
- Lift

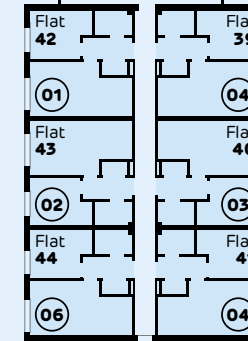
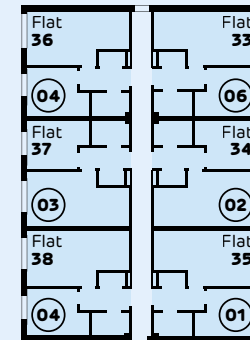


Block 2

Block 1



Block 1



Floorplates

Floor 04  
Block 1



Floorplates

Floor 05  
Block 1



- Plot type
- Stairs
- Lift



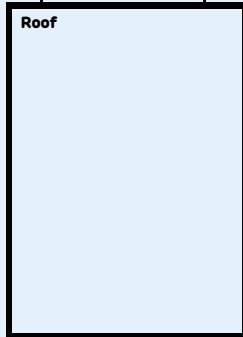
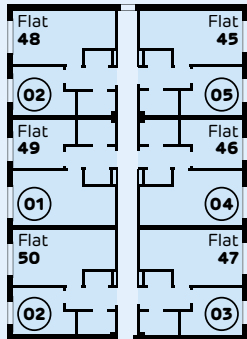
Block 2

- Plot type
- Stairs
- Lift

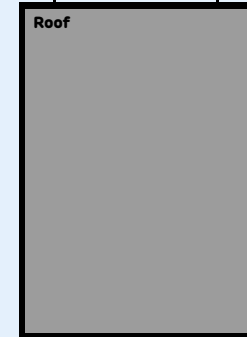
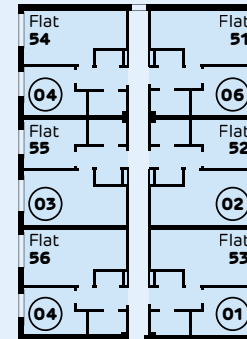


Block 2

Block 1



Block 1



## Floorplans

### Flat Type 1

Gross Internal Area  
417 sq ft (38.7 sq m)

Living/Dining/Kitchen  
10'6" x 20'4" (3.200m x 6.200m)

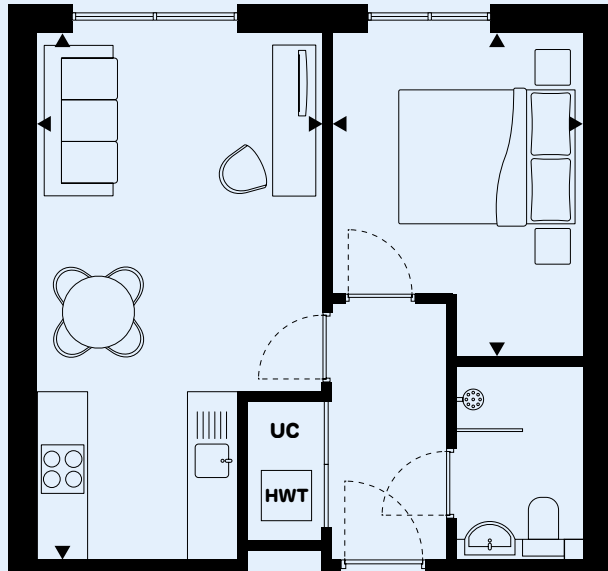
Bedroom  
9'7" x 12'5" (2.925m x 3.775m)

#### Block 1

Floor 01, Flat 11  
Floor 01, Flat 18  
Floor 02, Flat 25  
Floor 02, Flat 28  
Floor 03, Flat 35  
Floor 03, Flat 42  
Floor 04, Flat 49  
Floor 05, Flat 53

#### Block 2

Floor 02, Flat 12  
Floor 02, Flat 14



Utility Cupboard is marked as **UC**  
Hot water tank is marked as **HWT**

## Floorplans

### Flat Type 2

Gross Internal Area  
417 sq ft (38.7 sq m)

Living/Dining/Kitchen  
10'6" x 20'4" (3.200m x 6.200m)

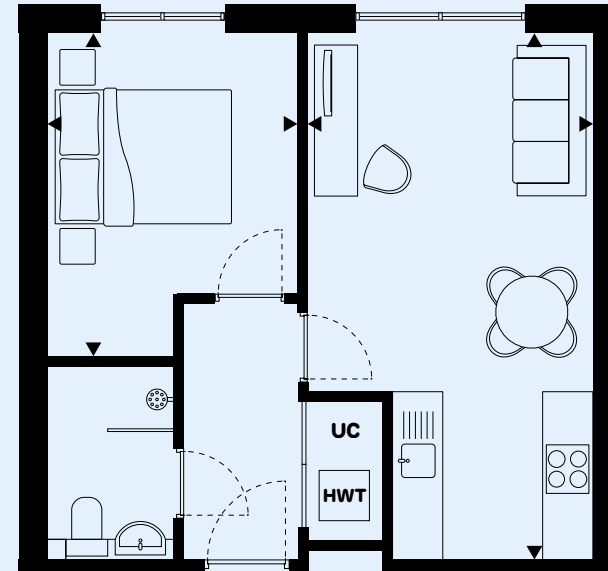
Bedroom  
9'7" x 12'5" (2.925m x 3.775m)

#### Block 1

Floor 01, Flat 10  
Floor 01, Flat 19  
Floor 02, Flat 24  
Floor 02, Flat 26  
Floor 02, Flat 27  
Floor 02, Flat 29  
Floor 03, Flat 34  
Floor 03, Flat 43  
Floor 04, Flat 48  
Floor 04, Flat 50  
Floor 05, Flat 52

#### Block 2

Floor 01, Flat 07  
Floor 02, Flat 16  
Floor 03, Flat 19



Utility Cupboard is marked as **UC**  
Hot water tank is marked as **HWT**

## Floorplans

### Flat Type 3

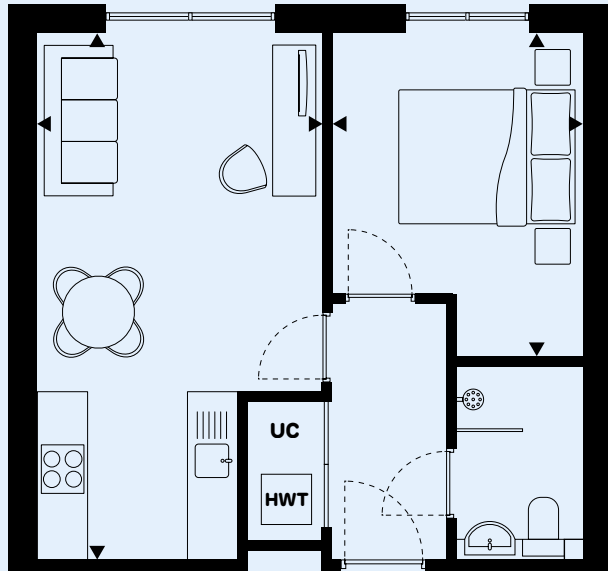
**Gross Internal Area**  
417 sq ft (38.7 sq m)

**Living/Dining/Kitchen**  
10'6" x 20'4" (3.200m x 6.200m)

**Bedroom**  
9'7" x 12'5" (2.925m x 3.775m)

**Block 1**  
Floor 01, Flat 13  
Floor 01, Flat 16  
Floor 02, Flat 23  
Floor 02, Flat 30  
Floor 03, Flat 37  
Floor 03, Flat 40  
Floor 04, Flat 47  
Floor 05, Flat 55

**Block 2**  
Floor 01, Flat 06  
Floor 01, Flat 08  
Floor 03, Flat 18  
Floor 03, Flat 20



Utility Cupboard is marked as **UC**  
Hot water tank is marked as **HWT**

## Floorplans

### Flat Type 4

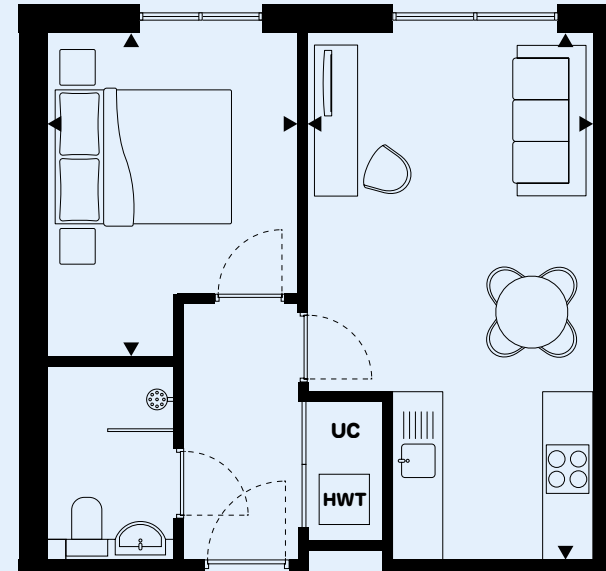
**Gross Internal Area**  
417 sq ft (38.7 sq m)

**Living/Dining/Kitchen**  
10'6" x 20'4" (3.200m x 6.200m)

**Bedroom**  
9'7" x 12'5" (2.925m x 3.775m)

**Block 1**  
Floor 01, Flat 12  
Floor 01, Flat 14  
Floor 01, Flat 15  
Floor 01, Flat 17  
Floor 02, Flat 22  
Floor 02, Flat 31  
Floor 03, Flat 36  
Floor 03, Flat 38  
Floor 03, Flat 39  
Floor 03, Flat 41  
Floor 04, Flat 46  
Floor 05, Flat 54  
Floor 05, Flat 56

**Block 2**  
Floor 01, Flat 10  
Floor 02, Flat 13  
Floor 03, Flat 22



Utility Cupboard is marked as **UC**  
Hot water tank is marked as **HWT**

**Floorplans**

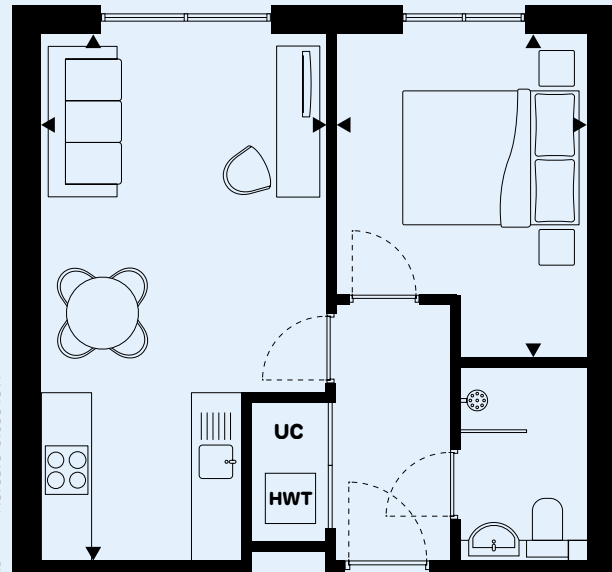
**Flat**  
Type 5

Gross Internal Area  
408 sq ft (37.9 sq m)

Living/Dining/Kitchen  
10'6" x 20'4" (3.200m x 6.200m)

Bedroom  
9'7" x 12'5" (2.925m x 3.775m)

**Block 1**  
Floor 02, Flat 21  
Floor 02, Flat 32  
Floor 04, Flat 45



Utility Cupboard is marked as **UC**  
Hot water tank is marked as **HWT**

**Floorplans**

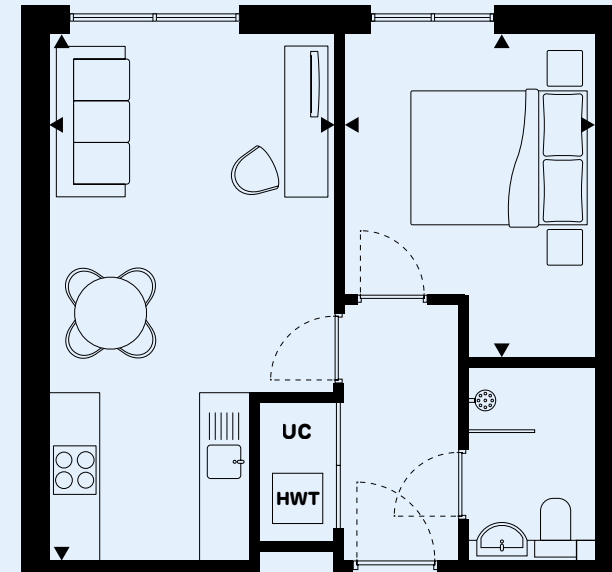
**Flat**  
Type 6

Gross Internal Area  
408 sq ft (37.9 sq m)

Living/Dining/Kitchen  
10'6" x 20'4" (3.200m x 6.200m)

Bedroom  
9'7" x 12'5" (2.925m x 3.775m)

**Block 1**  
Floor 01, Flat 09  
Floor 01, Flat 20  
Floor 03, Flat 33  
Floor 03, Flat 44  
Floor 05, Flat 51



Utility Cupboard is marked as **UC**  
Hot water tank is marked as **HWT**



**Floorplans**

**Flat**  
Type 7  
Terrace

**Gross Internal Area**  
488 sq ft (45.3 sq m)

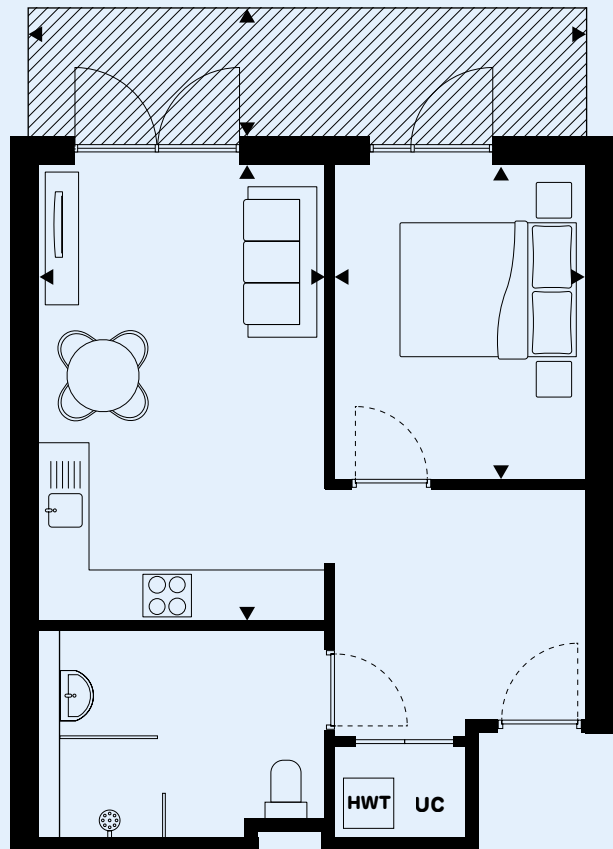
**Living/Dining/Kitchen**  
10'6" x 17'9" (3.200m x 5.415m)

**Bedroom**  
9'7" x 11'9" (2.930m x 3.585m)

**Terrace**  
22'1" x 4'10" (6.730m x 1.470m)

**Block 1**  
Ground Floor, Flat 05

This is a wheelchair adaptable home;  
please ask a member of the Sales Team if  
you would like to see a separate furniture  
layout intended for a wheelchair user.



Utility Cupboard is marked as **UC**  
Hot water tank is marked as **HWT**

**Floorplans**

**Flat**  
Type 8  
Terrace

**Gross Internal Area**  
488 sq ft (45.3 sq m)

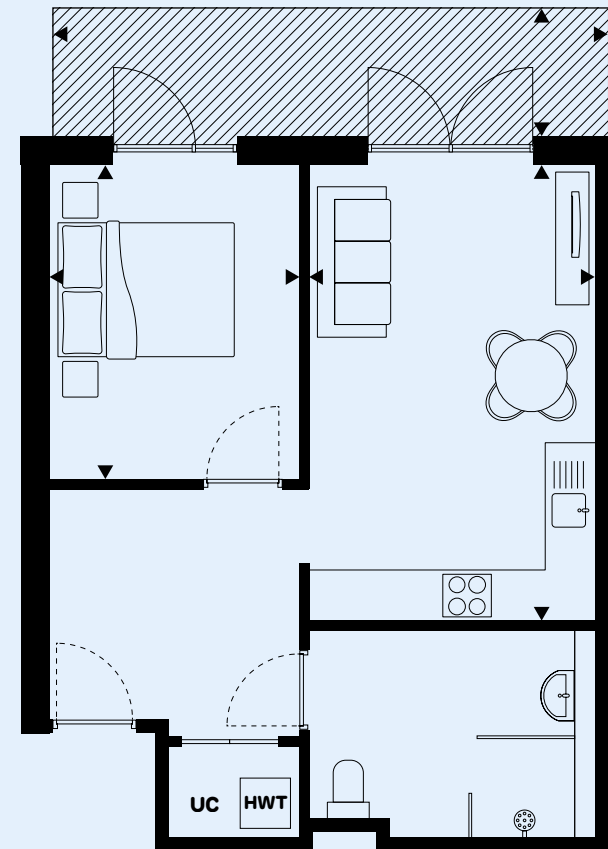
**Living/Dining/Kitchen**  
10'6" x 17'9" (3.200m x 5.415m)

**Bedroom**  
9'7" x 11'9" (2.930m x 3.585m)

**Terrace**  
22'1" x 4'10" (6.730m x 1.470m)

**Block 1**  
Ground Floor, Flat 06

This is a wheelchair adaptable home;  
please ask a member of the Sales Team if  
you would like to see a separate furniture  
layout intended for a wheelchair user.



Utility Cupboard is marked as **UC**  
Hot water tank is marked as **HWT**

**Floorplans**

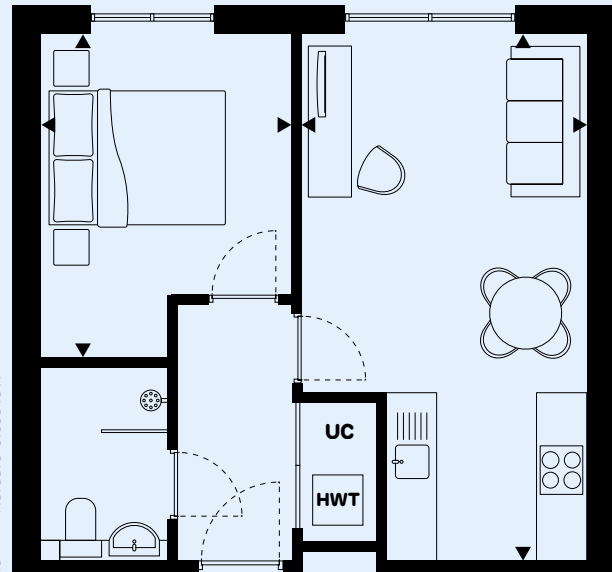
**Flat**  
Type 9

Gross Internal Area  
417 sq ft (38.7 sq m)

Living/Dining/Kitchen  
10'6" x 20'4" (3.200m x 6.200m)

Bedroom  
9'7" x 12'5" (2.925m x 3.775m)

**Block 2**  
Floor 01, Flat 05  
Floor 03, Flat 17



Utility Cupboard is marked as **UC**  
Hot water tank is marked as **HWT**

**Floorplans**

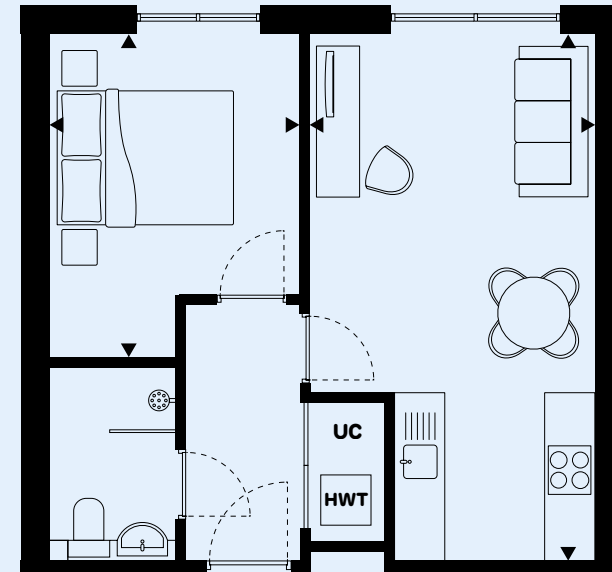
**Flat**  
Type 10

Gross Internal Area  
417 sq ft (38.7 sq m)

Living/Dining/Kitchen  
10'6" x 20'4" (3.200m x 6.200m)

Bedroom  
9'7" x 12'5" (2.925m x 3.775m)

**Block 2**  
Floor 02, Flat 11



Utility Cupboard is marked as **UC**  
Hot water tank is marked as **HWT**

**Floorplans**

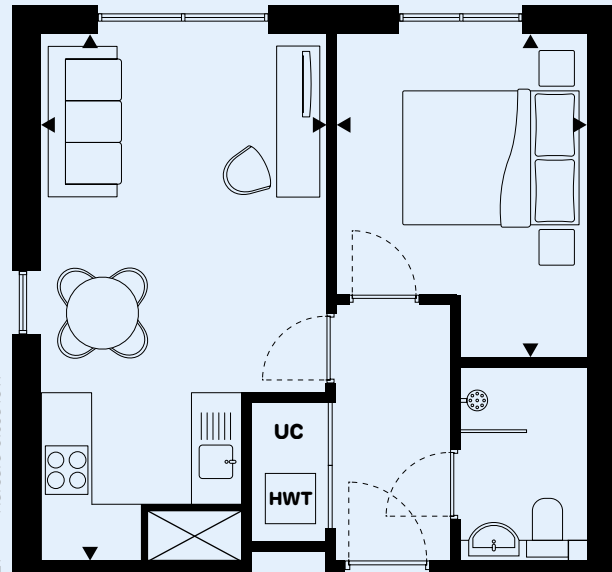
**Flat**  
Type 11

Gross Internal Area  
408 sq ft (37.9 sq m)

**Block 2**  
Floor 02, Flat 15

Living/Dining/Kitchen  
10'6" x 20'4" (3.200m x 6.200m)

Bedroom  
9'7" x 12'5" (2.925m x 3.775m)



Utility Cupboard is marked as **UC**  
Hot water tank is marked as **HWT**

**Floorplans**

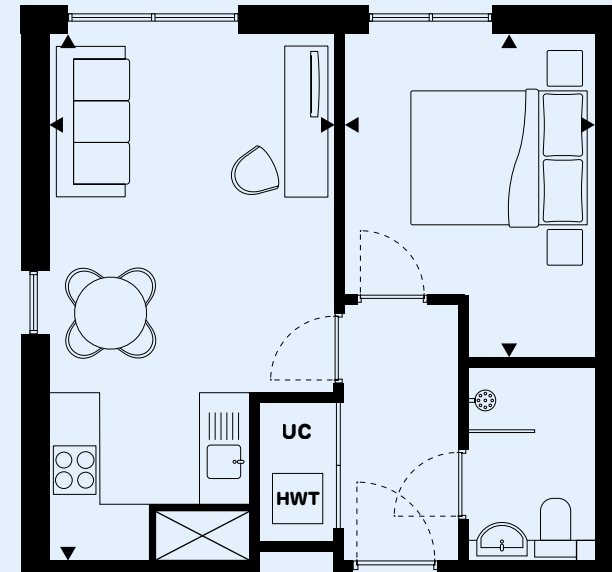
**Flat**  
Type 12

Gross Internal Area  
408 sq ft (37.9 sq m)

**Block 2**  
Floor 01, Flat 09  
Floor 03, Flat 21

Living/Dining/Kitchen  
10'6" x 20'4" (3.200m x 6.200m)

Bedroom  
9'7" x 12'5" (2.925m x 3.775m)



Utility Cupboard is marked as **UC**  
Hot water tank is marked as **HWT**

**Floorplans**

**Flat**  
Type 13  
Terrace

**Gross Internal Area**  
417 sq ft (38.7 sq m)

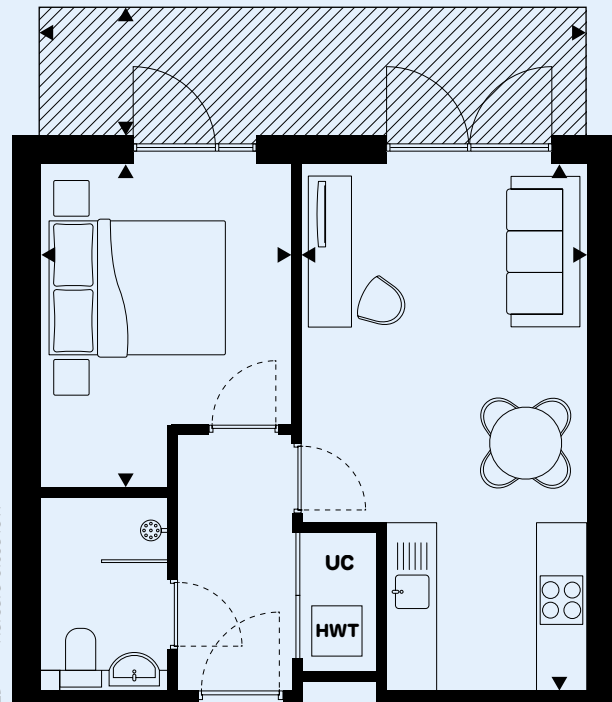
**Living/Dining/Kitchen**  
10'6" x 20'4" (3.200m x 6.200m)

**Bedroom**  
9'7" x 12'5" (2.925m x 3.775m)

**Terrace**  
21'2" x 4'10" (6.450m x 1.470m)

**Block 1**  
Ground Floor, Flat 02  
Ground Floor, Flat 07

**Block 2**  
Ground Floor, Flat 01



Utility Cupboard is marked as **UC**  
Hot water tank is marked as **HWT**

**Floorplans**

**Flat**  
Type 14  
Terrace

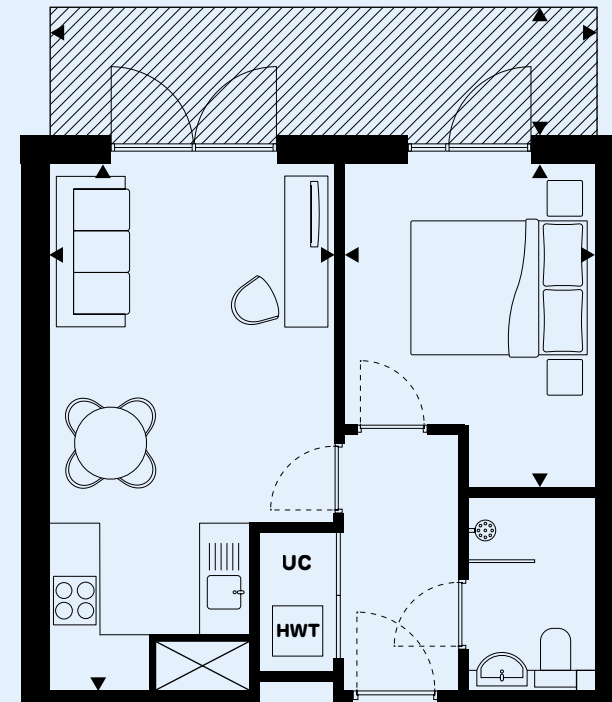
**Gross Internal Area**  
408 sq ft (37.9 sq m)

**Living/Dining/Kitchen**  
10'6" x 20'4" (3.200m x 6.200m)

**Bedroom**  
9'7" x 12'5" (2.925m x 3.775m)

**Terrace**  
21'2" x 4'10" (6.450m x 1.470m)

**Block 1**  
Ground Floor, Flat 01  
Ground Floor, Flat 08



Utility Cupboard is marked as **UC**  
Hot water tank is marked as **HWT**

**Floorplans**

**Flat**  
Type 15  
Terrace

**Gross Internal Area**  
417 sq ft (38.7 sq m)

**Living/Dining/Kitchen**  
10'6" x 20'4" (3.200m x 6.200m)

**Bedroom**  
9'7" x 12'5" (2.925m x 3.775m)

**Terrace**  
20'4" x 4'10" (6.200m x 1.470m)

**Block 1**  
Ground Floor, Flat 04

**Block 2**  
Ground Floor, Flat 02

**Floorplans**

**Flat**  
Type 16  
Terrace

**Gross Internal Area**  
417 sq ft (38.7 sq m)

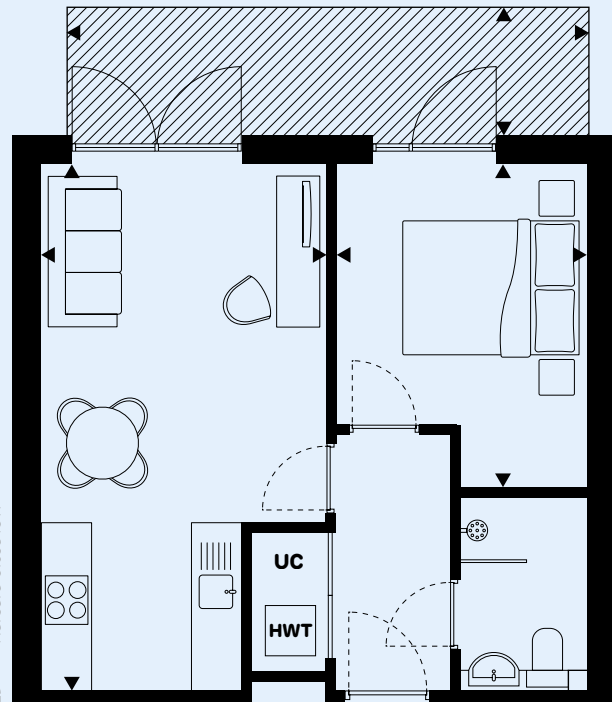
**Living/Dining/Kitchen**  
10'6" x 20'4" (3.200m x 6.200m)

**Bedroom**  
9'7" x 12'5" (2.925m x 3.775m)

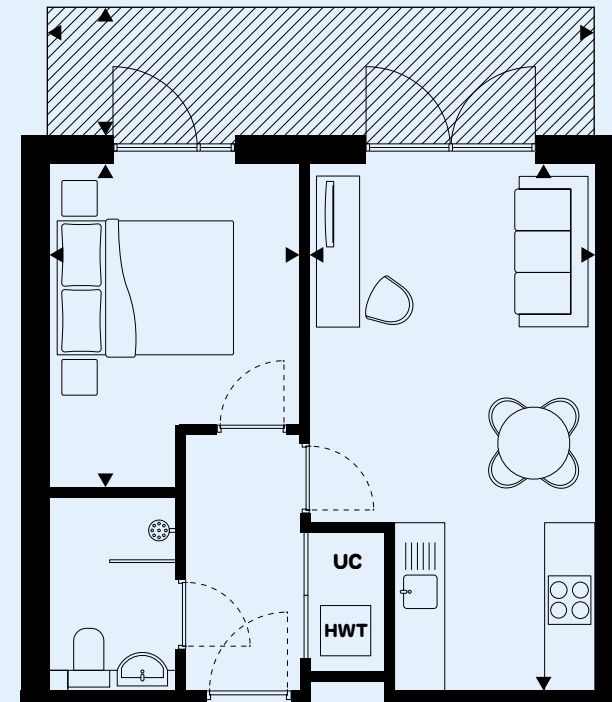
**Terrace**  
21'2" x 4'10" (6.450m x 1.470m)

**Block 1**  
Ground Floor, Flat 03

**Block 2**  
Ground Floor, Flat 04



Utility Cupboard is marked as **UC**  
Hot water tank is marked as **HWT**



Utility Cupboard is marked as **UC**  
Hot water tank is marked as **HWT**

## Floorplans

**Flat**  
Type 17  
Terrace

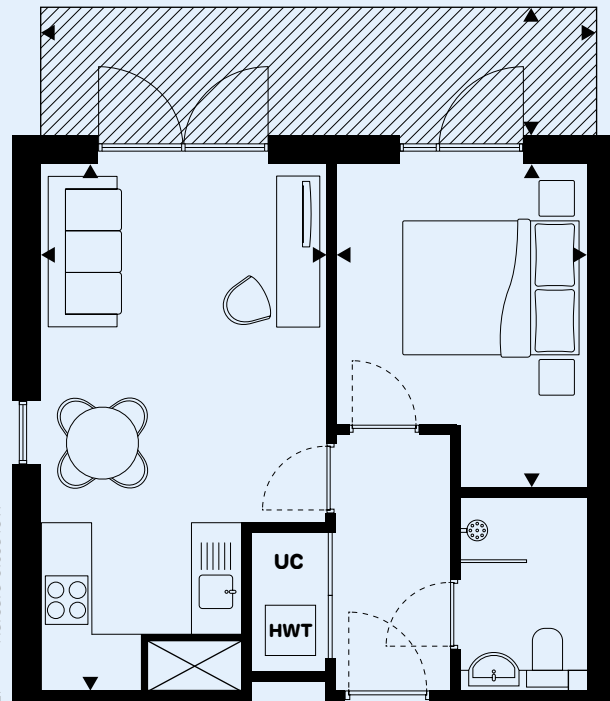
**Gross Internal Area**  
408 sq ft (37.9 sq m)

**Living/Dining/Kitchen**  
10'6" x 20'4" (3.200m x 6.200m)

**Bedroom**  
9'7" x 12'5" (2.925m x 3.775m)

**Terrace**  
20'3" x 4'10" (6.170m x 1.470m)

**Block 2**  
Ground Floor, Flat 03



Utility Cupboard is marked as **UC**  
Hot water tank is marked as **HWT**

## Contact

Pocket Living  
Tower House  
10 Southampton Street  
London  
WC2E 7HA

T 020 7291 3683



**Important notice:**  
While these particulars and plans are prepared with all due care for the convenience of intending purchasers, the information contained herein is a preliminary guide only. Neither the vendors, nor their agents or any person in their employ has any authority to make or give representation, warranty or guarantee (whether oral or written) in respect of, or in relation to, the development of any part thereof. The properties are sold unfurnished. Pocket Living employs a policy of continuous improvement and it reserves the right to alter or amend the specification as necessary and without prior notice. Harbard Close IG11 is a marketing name only. Prices, ground rent and estimated service charges are subject to contract.

# Harbard Close IG11 Barking



[pocketliving.com](https://pocketliving.com)